

DeCoSystem Cloud



# Global Production Report

Control your data wherever you are!

# Simple Login

DeCoSystem Cloud



Just go to

<https://globalservice.decosystem.com/decogst/>

and use your credentials to access!

mario.rossi@decosystem.it

.....| 



Visit our website!

Visit our LinkedIn page!

DeCoSystem Srl - via F.Petrarca 35 - 50041 Calenzano (FI)  
P.IVA e C.F. (VAT) : IT05151910485  
Tel. +39(0)554564748 - Fax +39(0)554554953  
Email: info@decosystem.com  
App Ver. 1.0.3 About us:



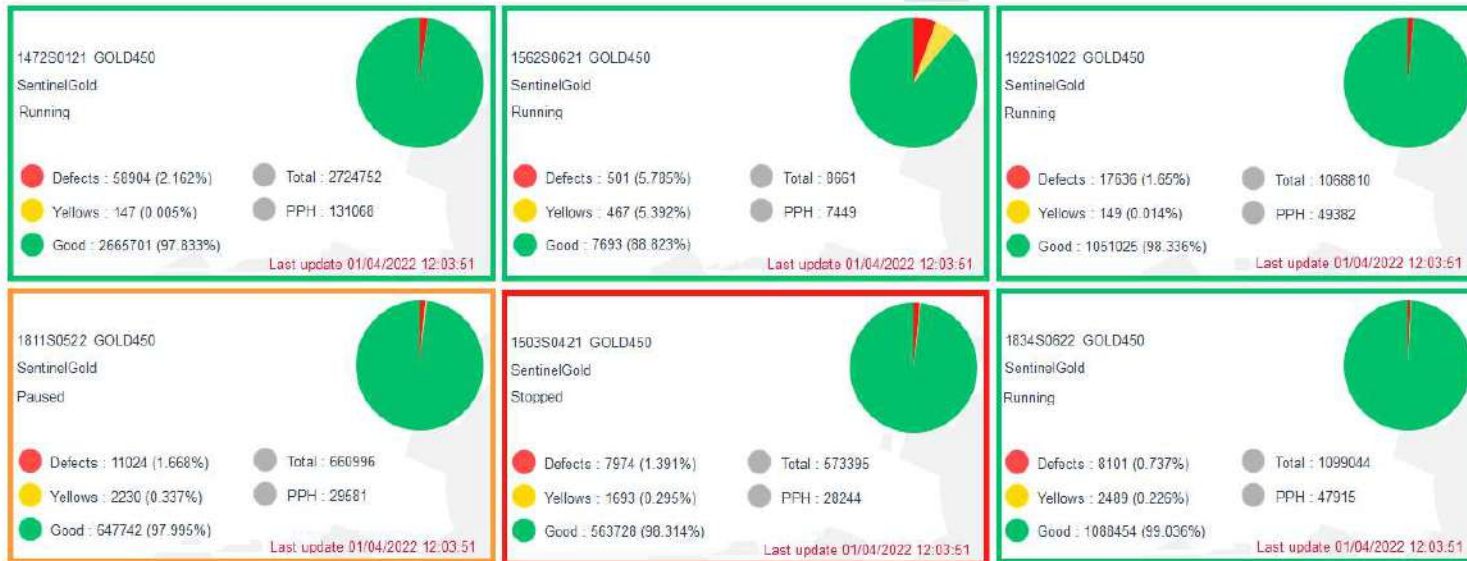
DeCoSystem Cloud



# Global Production Tool

All your production data, one click away!

# Systems Overview



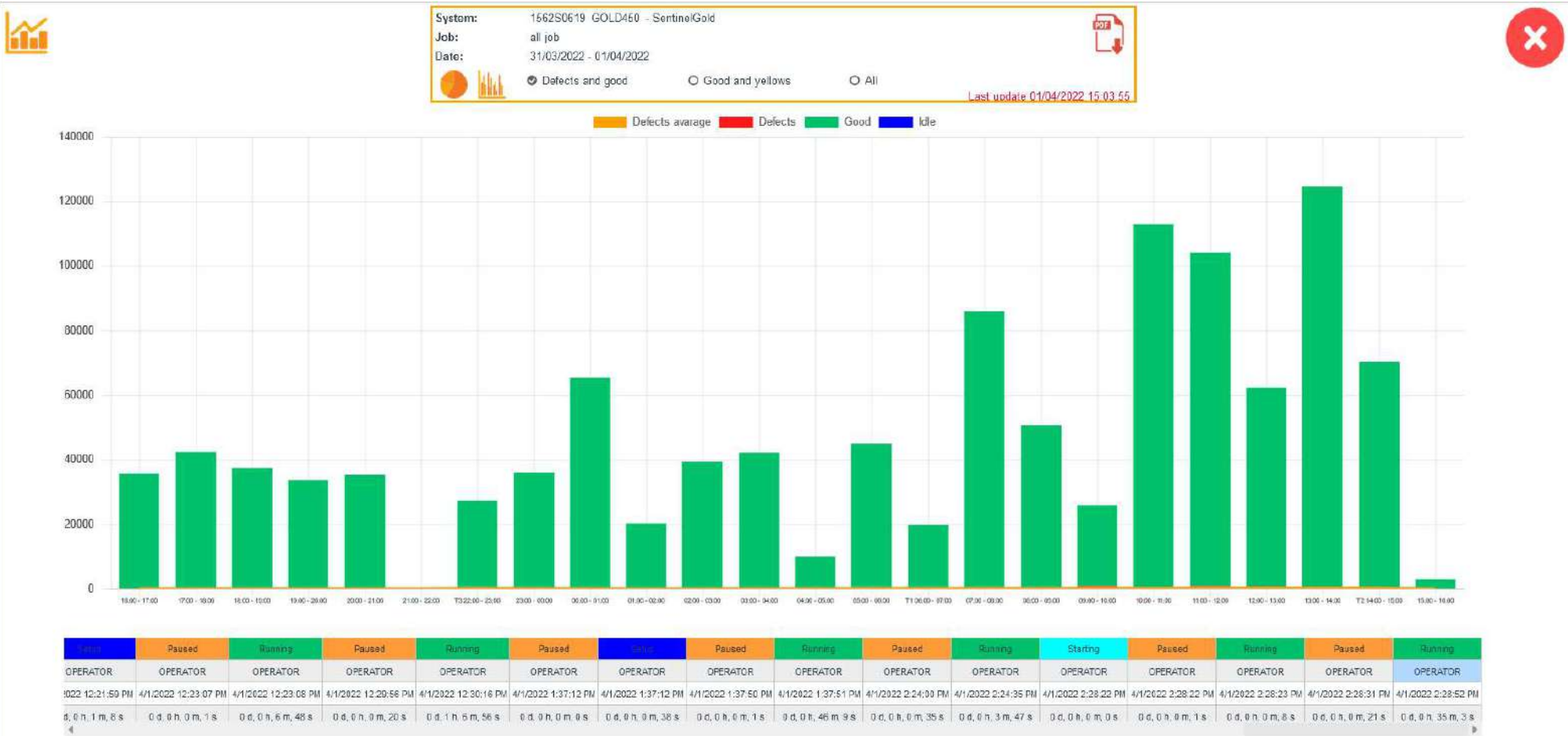
- ✓ All production data for the last 24 hours in one page
- ✓ Complete data: defect, warning, good, total controls and Parts Per Hour
- ✓ Current state of each machine:  
Starting/Live view/Setup/Running/Paused/Stopped
- ✓ An immediate feedback thanks to pie-charts and colored frames

# Statistics



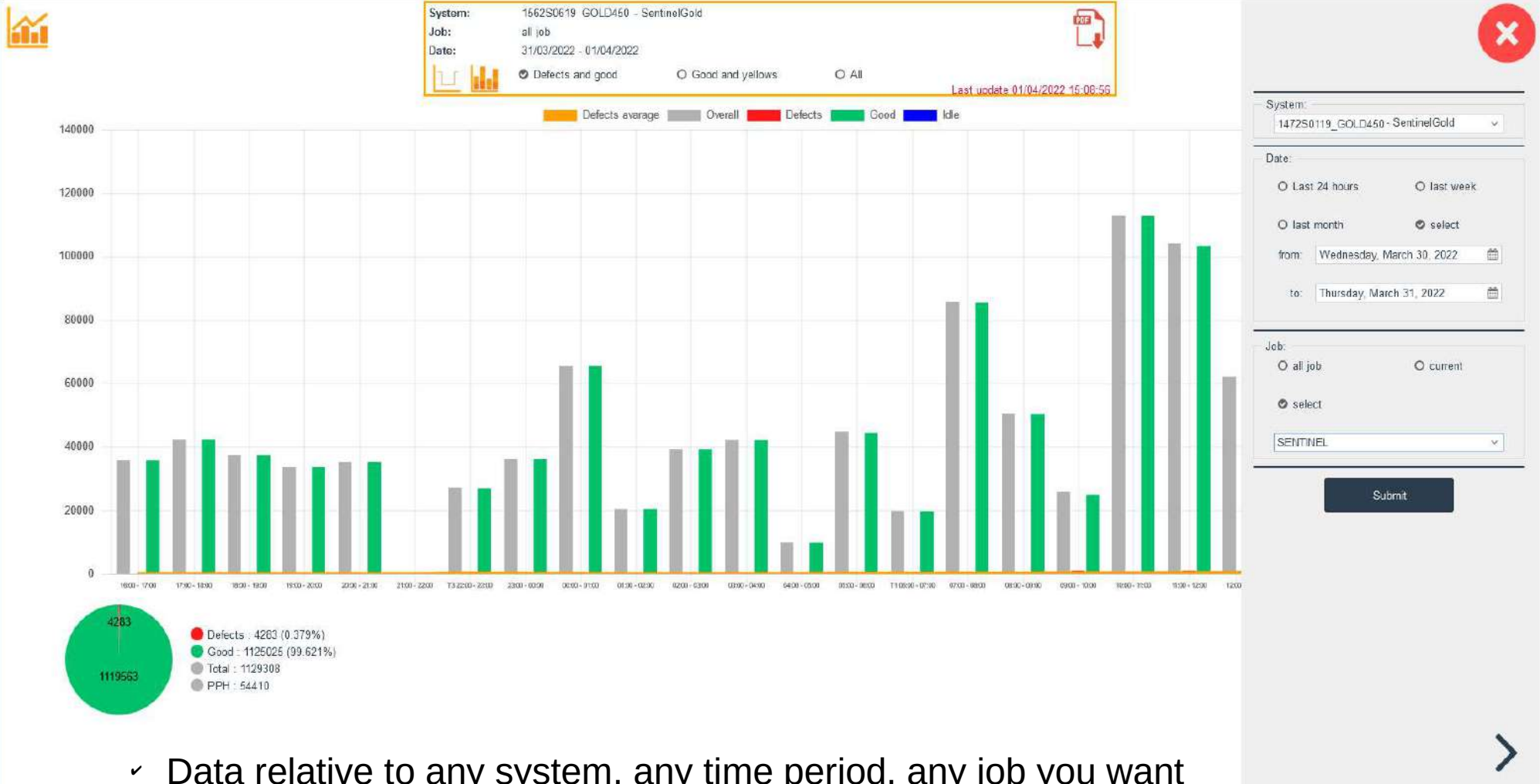
- ✓ Production data representation even more detailed
- ✓ From any range you choose you can get to see the detail of one single hour, by just clicking a bar
- ✓ Possibility to export the graph in a \*.pdf file
- ✓ Immediate feedback on machine status, thanks to the status graphs

# Statistics



✓ More details of software status, with just one click

# Statistics



- ✓ Data relative to any system, any time period, any job you want
- ✓ Possibility to switch among different visualizations

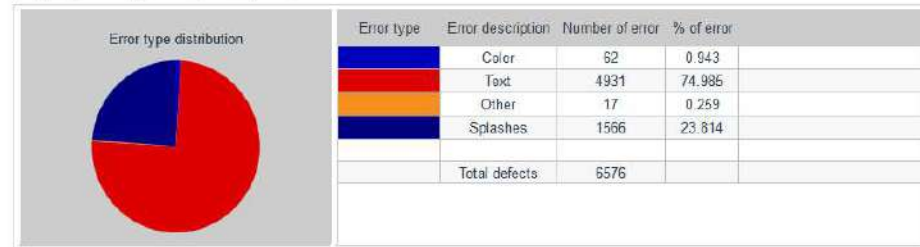
# Defect History



Product code: SENTINEL  
 Product description:  
 Job number:  
 System: 1922S1021 GOLD450 - SentinelGold

All regions Date: 01/04/2022 00:00:00.000 - 01/04/2022 23:59:59.999 - Reel: All reels - Lane: All lanes

REGID	Number of defects
1	625
2	595
3	526
4	436
5	435
6	425
7	422
8	401
9	374
10	308
11	224
12	222
13	186
14	116
15	111
16	102
17	70



- ✓ All defects of a job in one page
- ✓ Region with more defects are highlighted
- ✓ Number of bad controls for each region
- ✓ Number and description of each error type
- ✓ Error type ditribution



# Defect History



GS

DeCoSystem  
PRINTINSPECTIONMACHINES  
www.decosystem.com

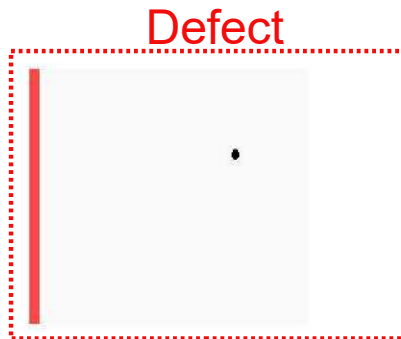
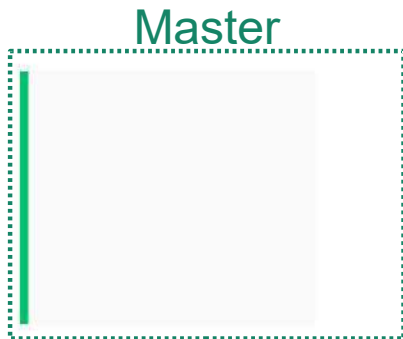
**Sentinel**  
Print & variable data inspection

000128958

DeCoSystem  
PRINTINSPECTIONMACHINES  
www.decosystem.com

**Sentinel**  
Print & variable data inspection

000128958



Product code: SENTINEL  
 Product description:  
 Job number:  
 System: 1922S1021 GOLD450 - SentinelGold  
 All regions  
 Date: 01/04/2022 00:00:00.000 - 01/04/2022 23:59:59.999 - Reel: All reels - Lane: All lanes

REGID	Number of defects
84	80
85	80
86	79
87	78
88	78
89	77
90	74
91	73
92	24
93	22
94	19
95	12
96	9
97	9
98	5
99	3
100	2

Error value	Error type	Reel Id	Meter	Registration date	Operator	Lane
9.4		0	36589.62	4/1/2022 6:37:09 AM	OPERATOR	5
6.98		0	36685.93	4/1/2022 6:45:52 AM	OPERATOR	5
6.85		0	36741.39	4/1/2022 6:56:28 AM	OPERATOR	5
6.88		0	37939.17	4/1/2022 8:41:15 AM	OPERATOR	5
7.06		0	38163.23	4/1/2022 8:53:15 AM	OPERATOR	5

Error type distribution

Error type	Error description	Number of error	% of error
	Splashes	5	100.000
	Total defects	5	



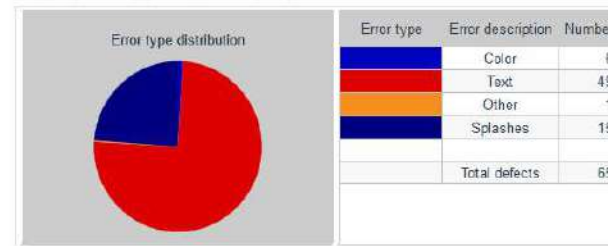
- ✓ Just a click to see all details of each bad region
- ✓ Click on defect to toggle and switch between master and defect

# Defect History



Product code: SENTINEL  
 Product description:  
 Job number:  
 System: 1922S1021 GOLD450 - SentinelGold  
 All regions: Date: 01/04/2022 00:00:00.000 - 01/04/2022 23:59:59.999

REGID	Number of defects
1	625
2	595
3	525
4	436
5	436
6	426
7	422
8	401
9	374
10	308
11	224
12	222
13	185
14	116
15	111
16	102
17	70



System: 1472S0119 GOLD450 - SentinelGold

Date:  today  last week  
 last month  select

from: Monday, April 4, 2022 00:00  
 to: Monday, April 4, 2022 23:59

Job: TEST-2

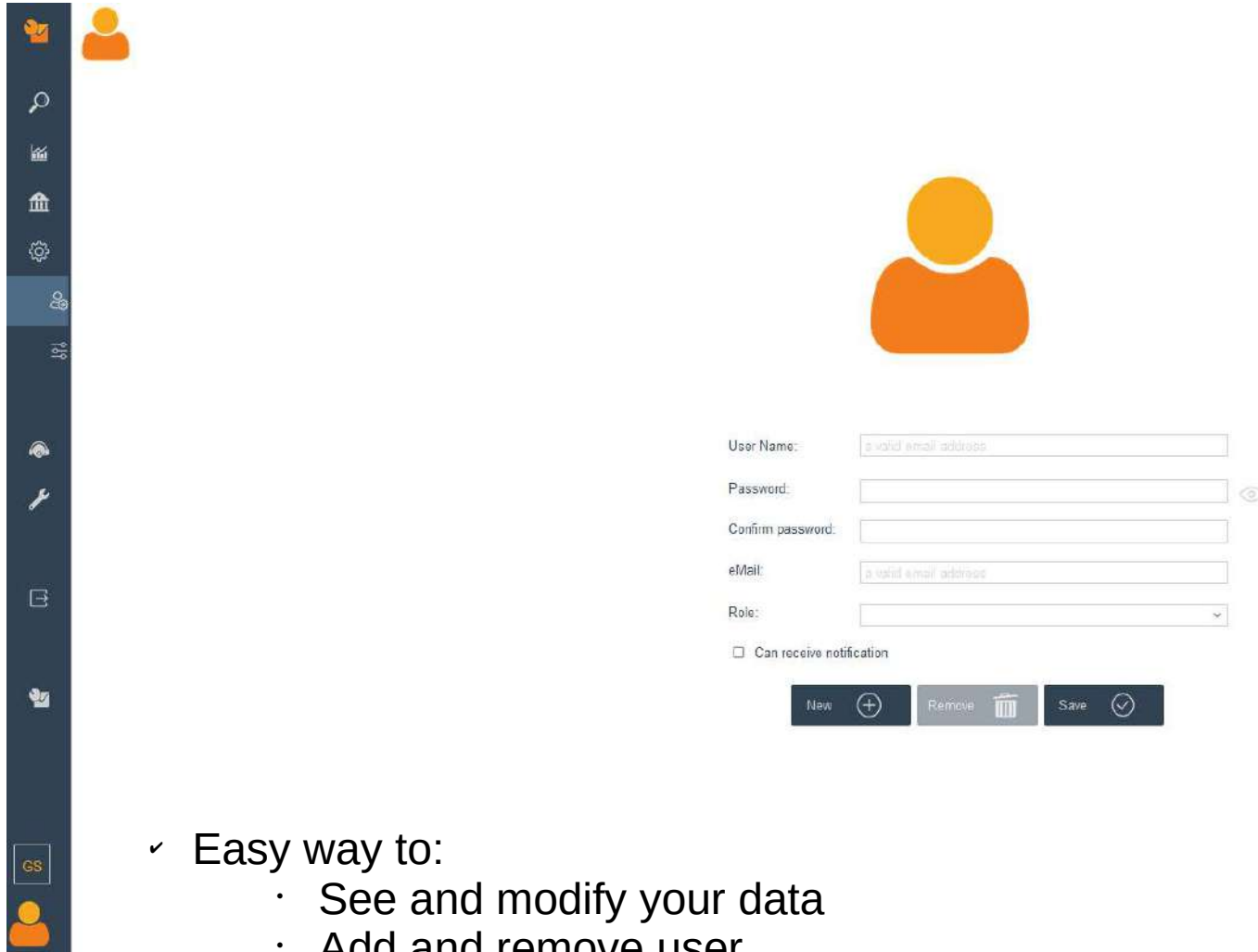
Reel: All reels

Lane: All lanes

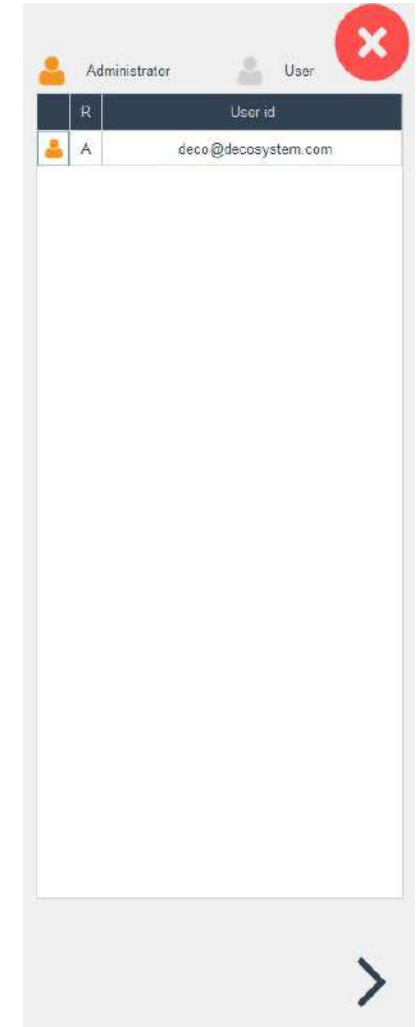
Submit

✓ Defect History relative to any system, any time period, any job, any reel and lane you want!

# User Management



A screenshot of a user management interface. On the left is a vertical sidebar with icons for home, search, list, settings, user management, and other functions. The main area features a large orange user icon placeholder. Below it is a form with the following fields: 'User Name:' with a placeholder 'a valid email address', 'Password:', 'Confirm password:', 'eMail:' with a placeholder 'a valid email address', and 'Role:' with a dropdown menu. A checkbox labeled 'Can receive notification' is present. At the bottom are three buttons: 'New' with a plus icon, 'Remove' with a trash icon, and 'Save' with a checkmark icon.

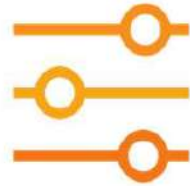


A screenshot of a user management table. The table has a header row with 'R' and 'User id'. The first data row shows a user with role 'A' and email 'deco@decosystem.com'. The interface includes a sidebar on the left, a top navigation bar with 'Administrator' and 'User' roles, and a red close button in the top right corner.

	R	User id
	A	deco@decosystem.com

- ✓ Easy way to:
  - See and modify your data
  - Add and remove user

# Factory Setup



The screenshot displays the 'Factory Setup' interface. On the left, a vertical sidebar contains various icons, including a gear for settings and a person icon for user management. The main content area is divided into two panels. The left panel, titled 'Number of shifts day', shows a dropdown menu set to '3'. Below this, three shift schedules are listed: T1 (from 06:00 to 14:00), T2 (from 14:00 to 22:00), and T3 (from 22:00 to 06:00). Each shift is represented by a text box, a 'from' label, two time dropdowns, a 'to' label, and two time dropdowns. A 'Save' button with a checkmark is at the bottom of this panel. The right panel contains three settings: 'Production scrap target' (0%), 'Sensitivity min threshold' (0), and 'Sensitivity max threshold' (255). Each setting has a corresponding slider bar. A 'Save' button with a checkmark is at the bottom of this panel.

- ✓ Set your shifts
- ✓ Set production scrap threshold: if scrap will be higher than this value, you will receive a email notification!
- ✓ Set sensitivity threshold: if sensitivity will move out of this range, you will receive a email notification!

DeCoSystem Cloud



# Global Production Report

Summarizing...

# What you can get

- ✓ Check all your current production every time and every where you want
- ✓ Verify the state of all your devices
- ✓ Query the system about the production of any system and any time period
- ✓ Analyze the defects of any job and any system
- ✓ Specialist technicians can monitor your devices
- ✓ Immediate technical intervention
- ✓ Never lose your data: you will have an additional copy in your local server

