



MULTILABEL

Bidirectional doctor machine
FOR BOOKLETS AND LABELS



MULTILABEL IS A HIGHLY PRODUCTIVE FINISHING MACHINE

Multilabel is equipped with *colour touch screen, automatic tension control, label/meter/diameter counter and Sentinel print inspection system.*

The nip roll permits a *perfect rewinding and speed management, automatic diameter calculation and excellent tension. Tension is controlled depending on the reel diameter.*

The ergonomic design of Multilabel allows you to choose operating position - standing or sitting.

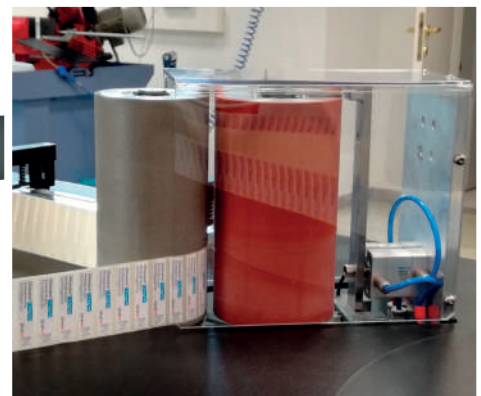
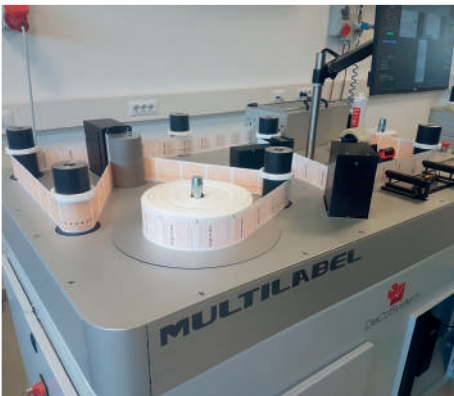
The fully integrated Sentinel vision inspection system guarantee a final product without printing defect.

Multilabel is fully prepared to integrate a numbering inkjet system

MULTILABEL

TECHNICAL DATA

Diameter	max. 400mm
Web wide	max. 120mm
Max speed	120m/min
Web-Tension	controlled in a range of 0,1-30Newton
Positive mandrels	80mm diameter
Negative mandrels	120mm diameter
Setting	Intuitive PLC touch screen for ease of use
Frame	Robust construction for longer life
Consumption	Low power and air consumption
Job recipes	up to 2000 with quick recall
Sensor	Ultrasonic label counter for every kind of material
Inkjet	Automatic trigger for inkjet system



EQUIPMENT

- Unwinder with *Bosch-Rexroth* servomotor
- Nip roll
- Rewinder with *Bosch-Rexroth* servomotor
- Bidirectional winding
- 7" color touch screen display with icon interface
- Sentinel M-scan 120 print inspection system
- Interchangeable unwinder and rewinder air shafts

SENTINEL M-SCAN 120 INSPECTION SYSTEM

Controls	100% print inspection
Light	LED diffuse light
CPU	Xeon Quadcore
Camera	5Mpixel colour camera
Resolution	0,05mm x 0,05mm
Minimum detectable defect	0,03mm ²

Technical data and system specifications refer to the state at the time of printing.

We reserve the right to modify them in the interest of a continuous program of further development.